

Vet Series Spot-On Flea Treatment

for medium dogs

exelpet

Label



DIRECTIONS FOR USE:

Contraindications:

This product is contraindicated for use on rabbits.

Dosage and Administration:

One pipette of 1.34mL treats one dog or puppy weighing 10 – 20kg bodyweight. For use on puppies from 2 months of age.

For use on dogs only.

Monthly application is recommended.

Animals should be weighed accurately prior to treatment.

Fleas (*Ctenocephalides felis*): For the treatment and prevention of flea infestation for one month, apply the entire contents of one pipette as directed. For ongoing flea control use EXELPET™ Vet Series™ Spot-On Flea Treatment monthly.

For the control of Flea Allergy Dermatitis (FAD), apply monthly to the affected pet and to all other dogs in the household.

Flea stages can often infest the pet's bedding and surrounding environment (such as carpets and soft furnishings). These areas should also be treated with a suitable insecticide and regular vacuuming, especially in cases of heavy infestation.

NOT TO BE USED FOR ANY PURPOSE, OR IN ANY MANNER, CONTRARY TO THIS LABEL UNLESS AUTHORISED UNDER APPROPRIATE LEGISLATION.



1329676

Instructions



Water Fastness:

Dogs must be treated with EXELPET™ Vet Series™ Spot-On Flea Treatment when they are dry. The effect of bathing or shampooing on the efficacy of EXELPET Vet Series Spot-On Flea Treatment has not been established.

Safety in Dogs:

Studies have demonstrated that EXELPET Vet Series Spot-On Flea Treatment has a significant margin of safety in dogs and puppies from 2 months of age. The safety of EXELPET Vet Series Spot-On Flea Treatment has not been established in breeding dogs of both sexes or during pregnancy and lactation.

If licking occurs shortly after application, a brief period of hypersalivation may be observed due to the taste of the carrier.

Avoid contact with the animal's eyes. In the case of accidental eye contact, immediately and thoroughly flush the eyes with water. Do not use EXELPET Vet Series Spot-On Flea Treatment if you or your pet have a known hypersensitivity to insecticides or alcohol.

SAFETY DIRECTIONS:

Will irritate the skin. Will damage the eyes. Avoid contact with eyes and skin. If product in eyes, wash it out immediately with water. Wash hands after use.



FIRST AID: If poisoning occurs, contact a doctor or Poisons Information Centre. Phone Australia 131126.

Additional information is available in the Material Safety Data Sheet.

DISPOSAL: Dispose of empty container by wrapping with paper and putting in garbage.

STORAGE: Store in the original packaging in a dry place below 30°C (Room Temperature). Protect from light.

MADE IN FRANCE

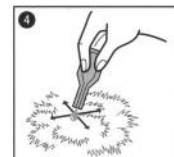
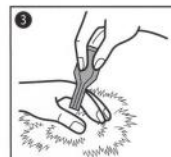
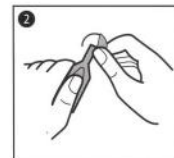
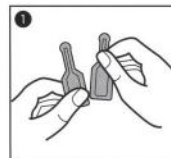
Exelpet Products
Petcare Place, Wodonga, VIC 3690.

™ Trademark.
© Exelpet Products.

Application:

Hold the pipette upright. Tap the narrow part of the pipette to ensure the contents are within the main body of the pipette. Break the snap-off top of the pipette along the scored line. Choose an area where licking cannot occur (e.g. back of the neck). Part the pet's coat until the skin is visible.

Place the tip of the pipette directly against the bared skin and squeeze gently.



If you would like more information on this product, or on controlling fleas on your dog, or have other queries of any kind, please contact EXELPET Customer Enquiries. Your feedback is important to us. Phone or Post: Australia: Toll Free Phone 1800 806 391; Reply Paid 153 PO Box 153, Wodonga, VIC, 3689. Or visit our website: www.exelpet.com.au